

North Carolina Offshore Energy Exploration Subcommittee

Mr. Jeff Keever
Senior Deputy Executive Director
Virginia Port Authority
February 23, 2010



THE **Port** OF
VIRGINIA

East Coast Logistics Hub for Offshore Energy Exploration



The Port of
Virginia



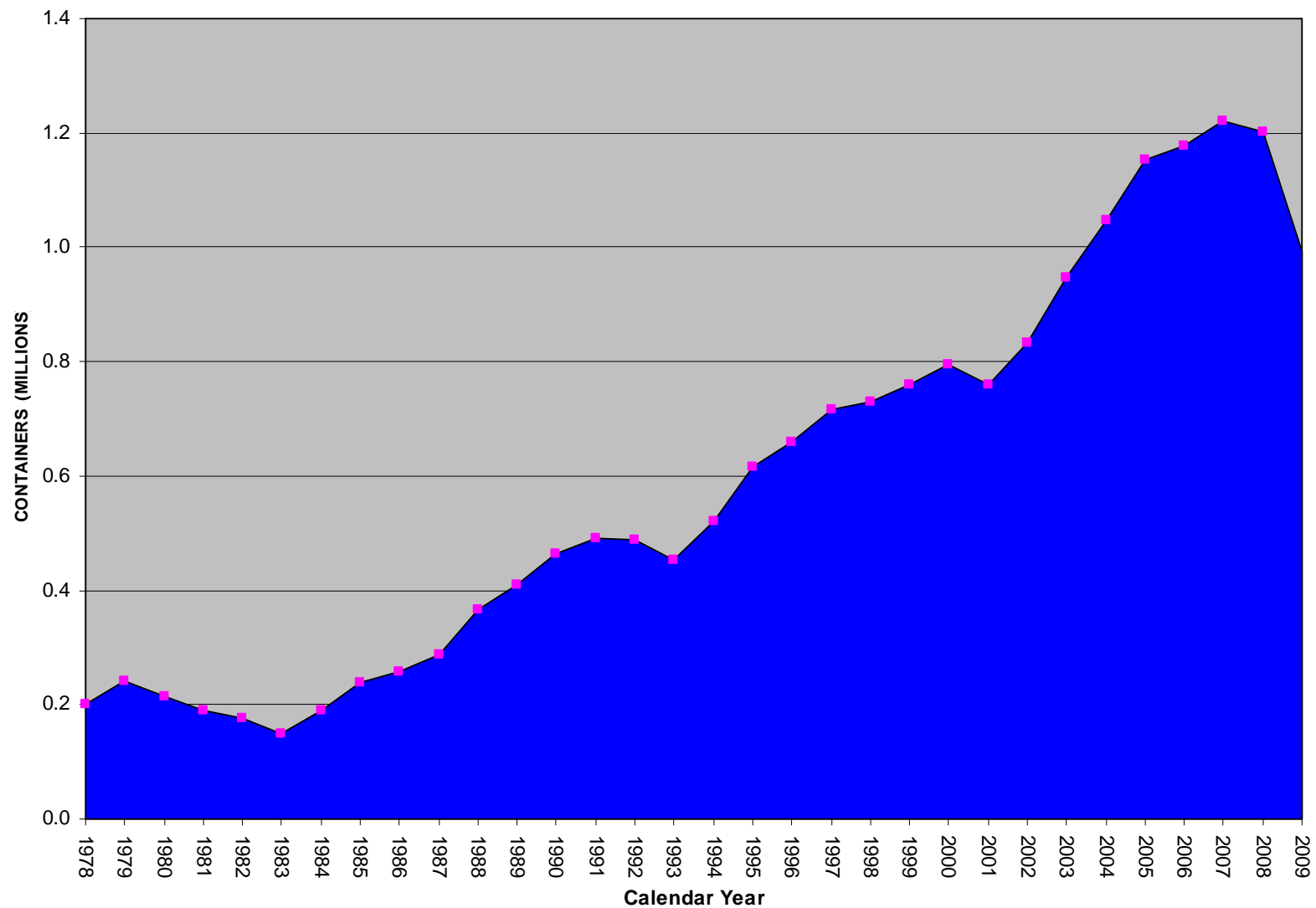
The Port of Virginia



- Virginia International Terminals, Inc.
 - A Virginia Non-Stock, Non-Profit Operating Affiliate of the Virginia Port Authority
 - Operates the Terminals Owned by the Commonwealth
 - Tax-exempt

- The Port of Virginia is an Economic Engine for the Commonwealth
 - 345,000 Port and Port-Related Jobs Statewide
 - \$41 Billion in Business Revenues
 - \$1.2 Billion in State and Local Taxes
- Increased Port Growth Results in More Jobs and Revenues for the Commonwealth

Port Growth- Currently Fifth Largest Port in the Nation



Intermodal Gateway

The nearly 1.8 Million TEUs moving over the Port of Virginia in 2009 were transported by:



4% Barges



30% Rail



66% Trucks

Source: Terminal Operator CY2009

Mid Atlantic Location

The Port of Virginia is
within a day's drive of
two-thirds of the U.S.
population
and 301,000
manufacturing firms



Expansion of the Panama Canal



- \$5.25 billion program to modernize and improve the Canal
- \$190 million channel deepening project began in 2002
- \$1.6 million project to redesign a third set of locks

Panama Canal



Overall length: 51 miles Maximum ship width: 13 containers
Lock Dimension: 110 ft. wide, 39.5 ft. deep, 1000 ft. long

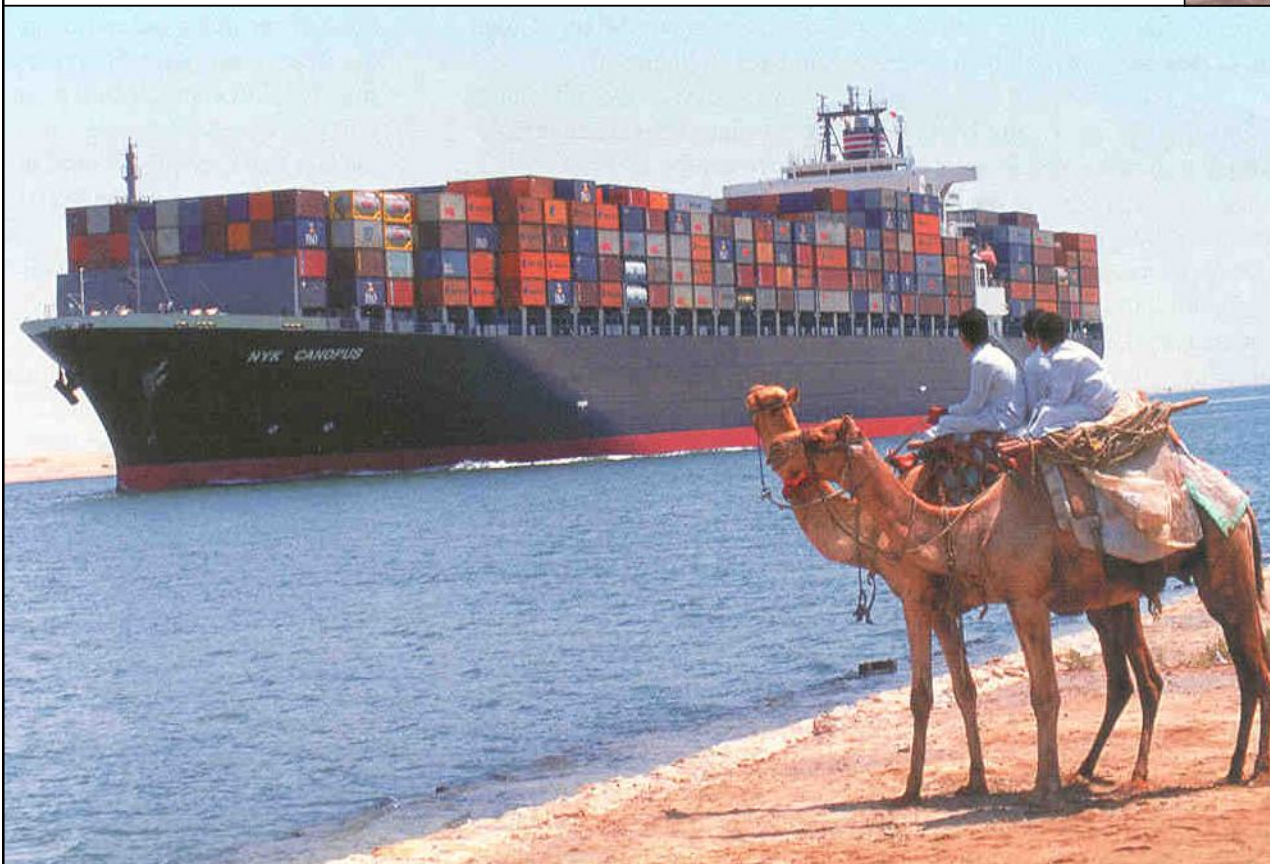
Suez Canal

Overall length: 120 miles

Width: 590ft / 622ft

Max. permissible draft: 62ft

The canal is sea level, no locks.



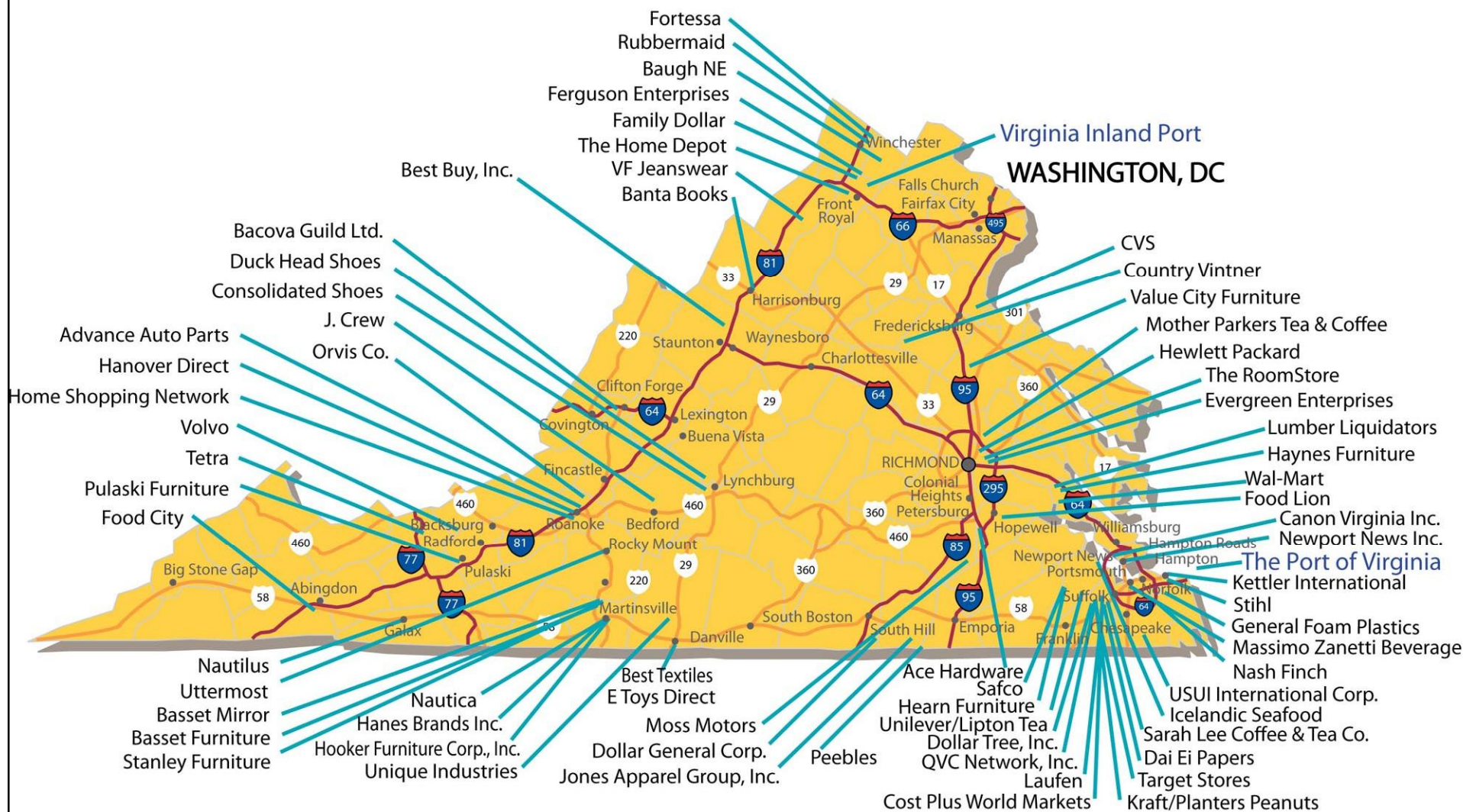
Emma Maersk

One of The World's Largest Container Ships



- 15,000 TEUs
- 22 containers wide
- 1,302 ft. long Eiffel Tower = 986 ft.
- Beam = 183.73 ft. . . . Olympic pool length = 164.04 ft.
- Draft = 50.8 ft.
- Crew = 13 people

Selected Distribution Facilities Located in Virginia



APM/Maersk Terminal, Portsmouth, VA



Phase 1 – Sept. 2007
Total Acreage: 230
Pier Length: 3200 ft.
Depth: 55 ft.
Cranes: 6
Capacity: 1 Million TEUs
Cost: \$500 Million

Craney Island Eastward Expansion

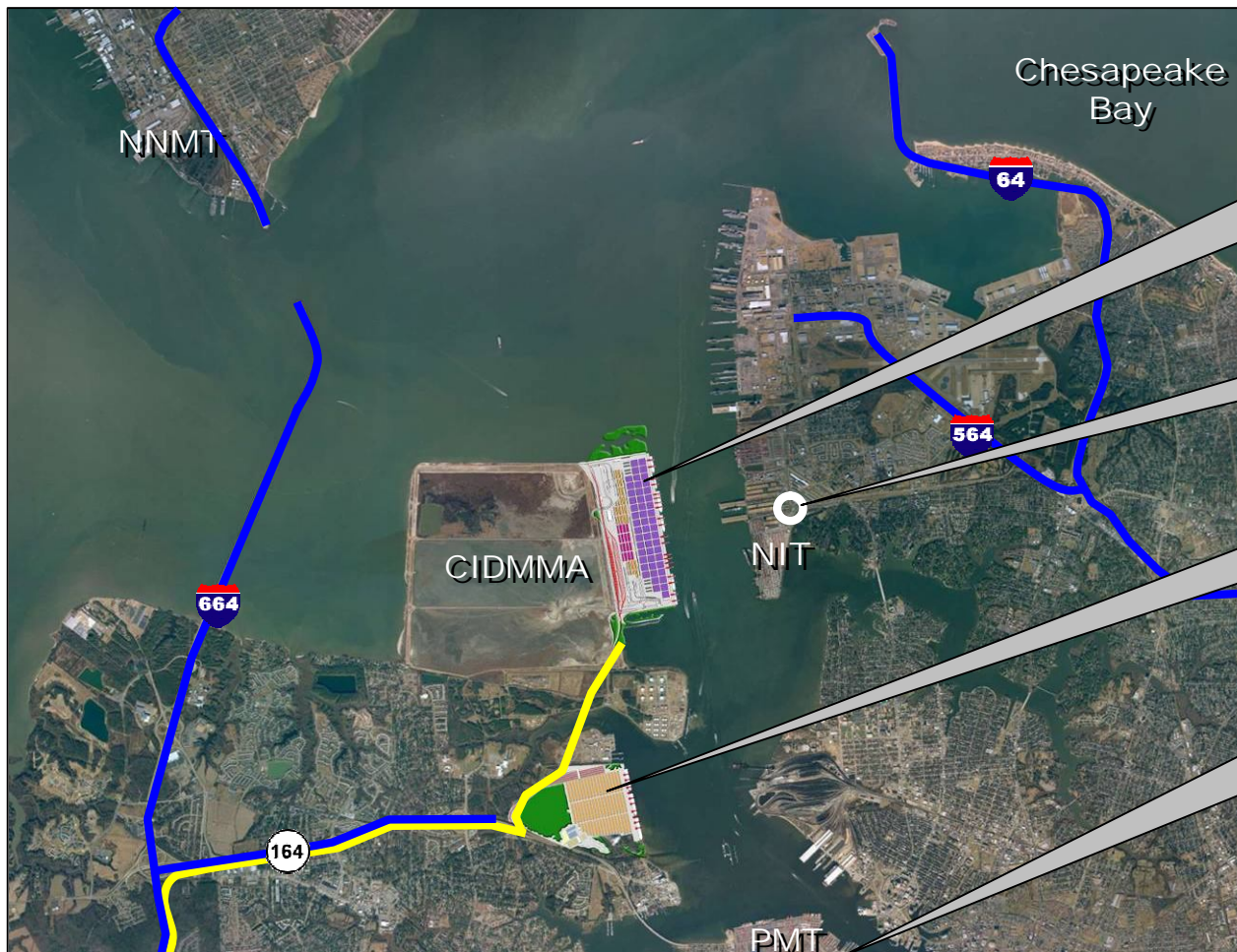


Typical Wind Turbine Dimensions



Turbines including poles and blades stand up to 400 ft. tall, with blades reaching 328 ft. across and in total weigh about 400,000 pounds each.

Current Regional Initiatives That Support Port Growth



Craney Island Marine Terminal - \$2.4 Billion

Norfolk International Terminals - \$450 Million

**APM Terminals
\$450 Million**

**Portsmouth Marine Terminal
70 acres**

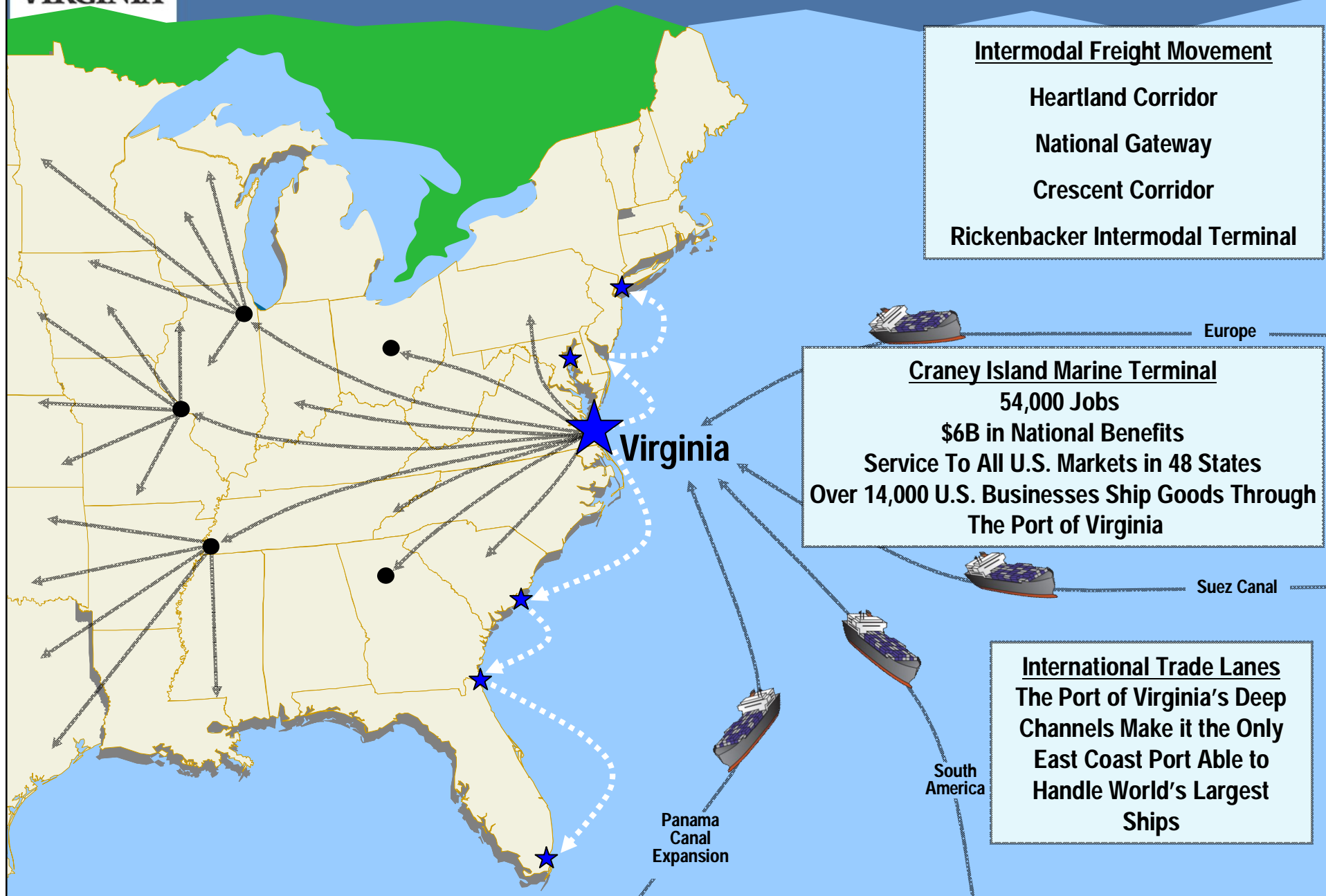
Heartland Corridor

Over \$3 Billion Commitment

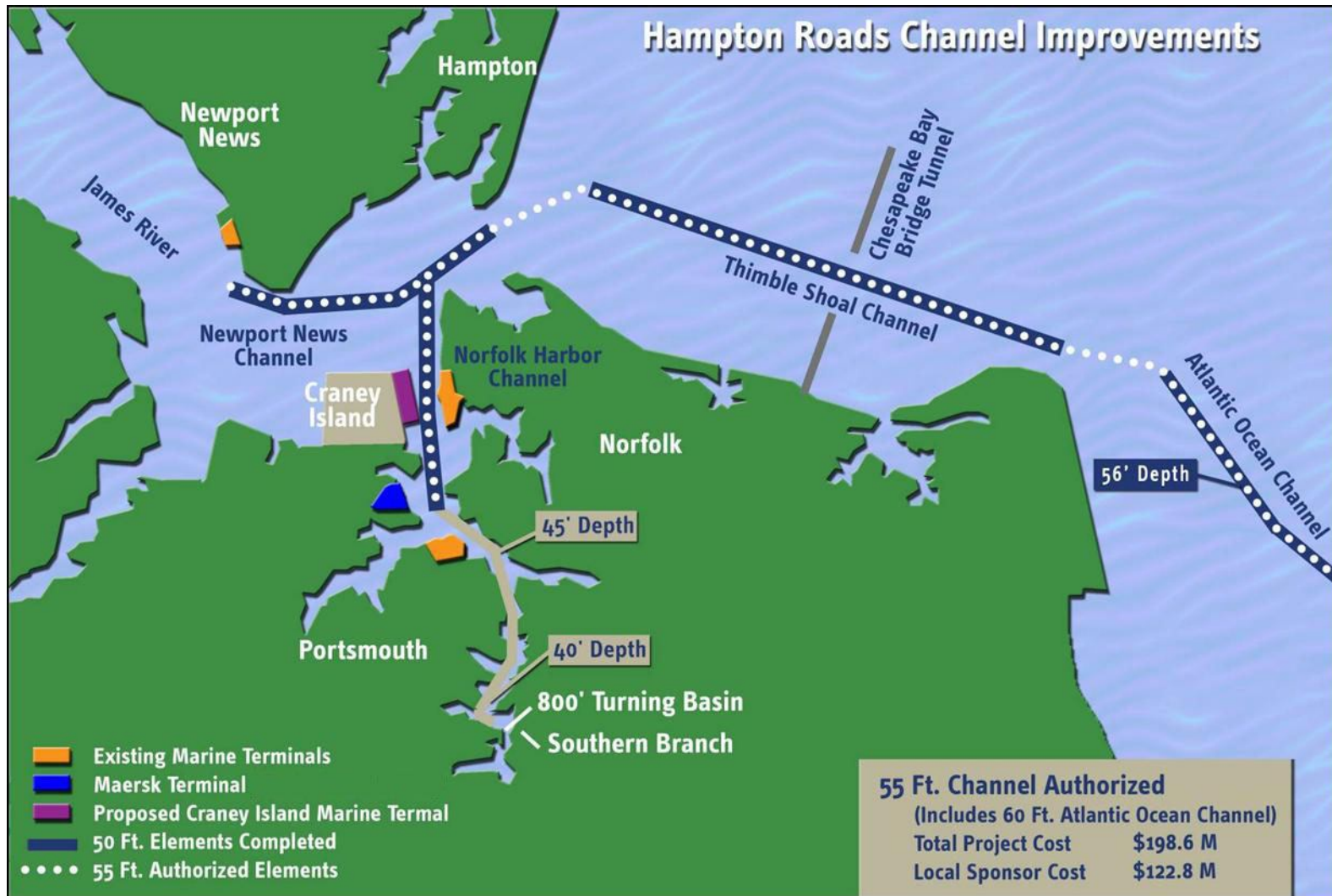
- Incentives to attract investment in manufacturing of offshore wind energy equipment
- Grants and Investment tax credits for re-tooling of fabrication facilities.
- Sales tax exemption for offshore wind energy equipment
- Subsidies for green jobs training programs
- Subsidies for wind development

- Home to largest industrial military complex in US
- Trained workforce includes: experienced maritime managers, engineers with technical and shipboard experience
- Military, industrial and educational infrastructure provides extensive training potential for new industries

The Future of The Port



50' Channel



Unobstructed Access To The Port of Virginia



Hampton Roads

Blue Sky

Cargo Vessel Air Draft

Savannah

Talmadge Bridge 185'

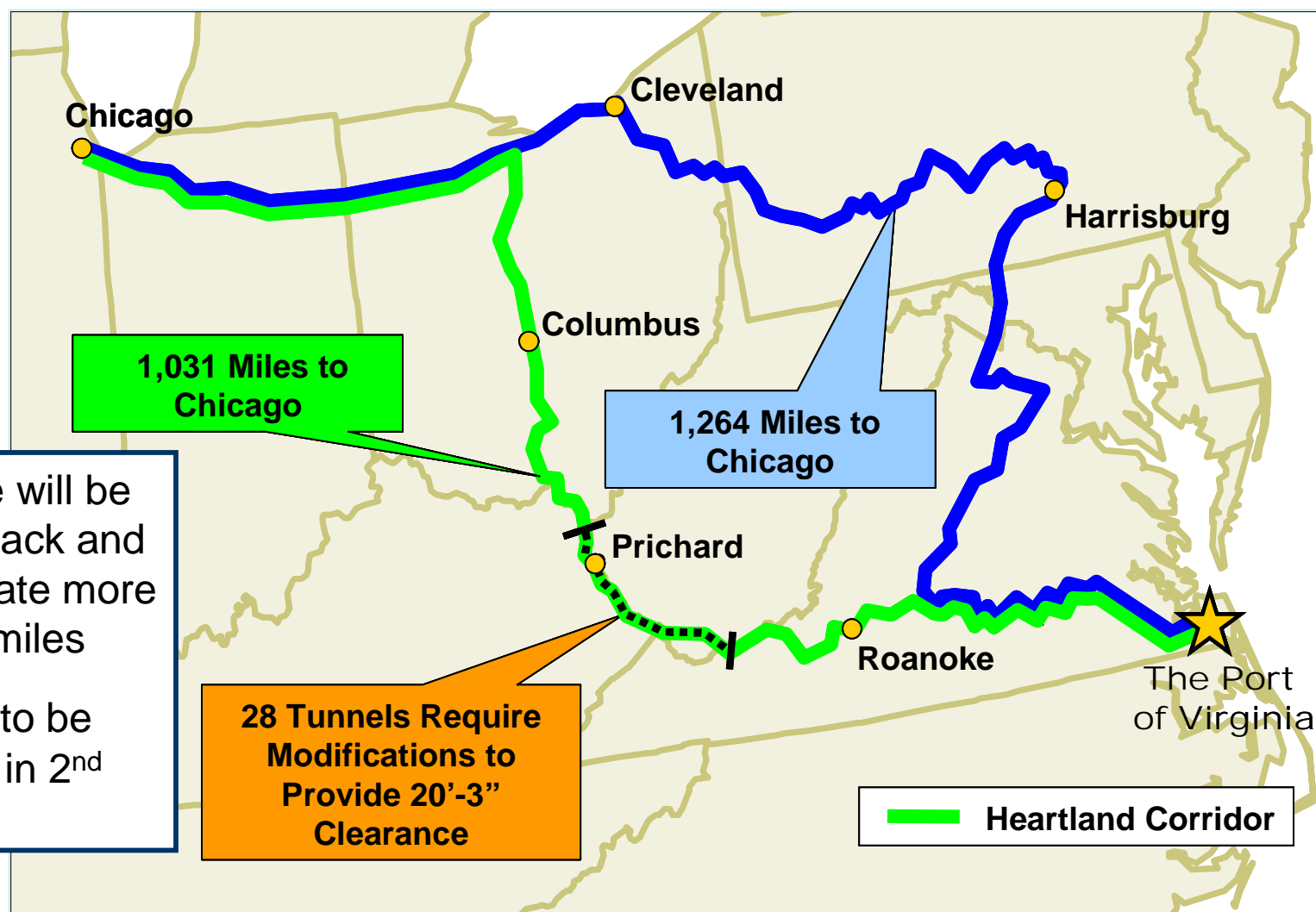
NY/NJ

Bayonne Bridge 151'

Emma Maersk

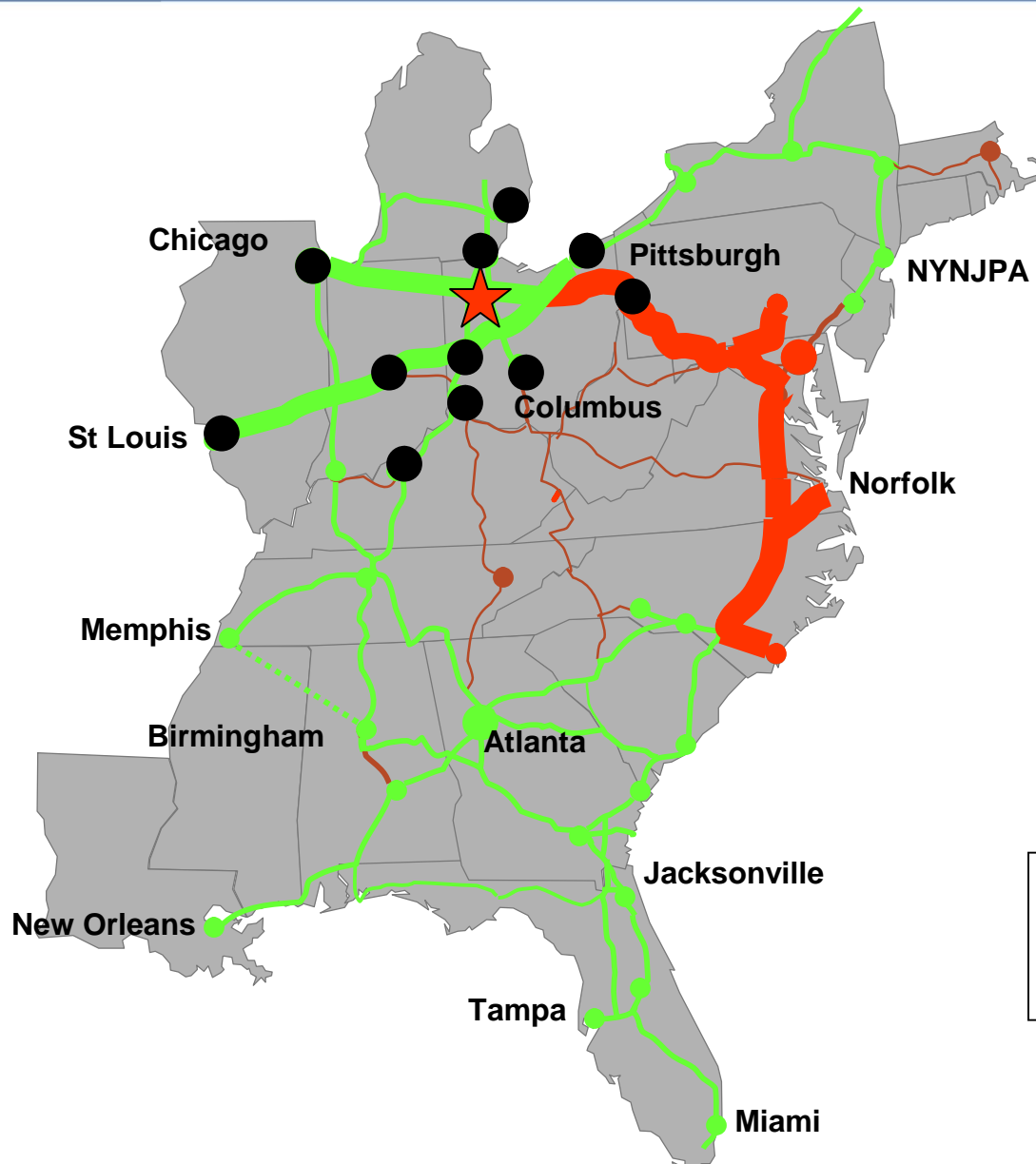
Keel to Mast Height 251'

Class 1 Rail – Norfolk Southern The Heartland Corridor



- New route will be Double-Stack and will eliminate more than 230 miles
- Expected to be Complete in 2nd Qtr 2010

Class 1 Rail – CSX The National Gateway



- Connects Norfolk to the Midwest and beyond

★ NW Ohio Transfer Yard enables CSX service to new major markets

- Expedites traffic through Chicago and St Louis gateways

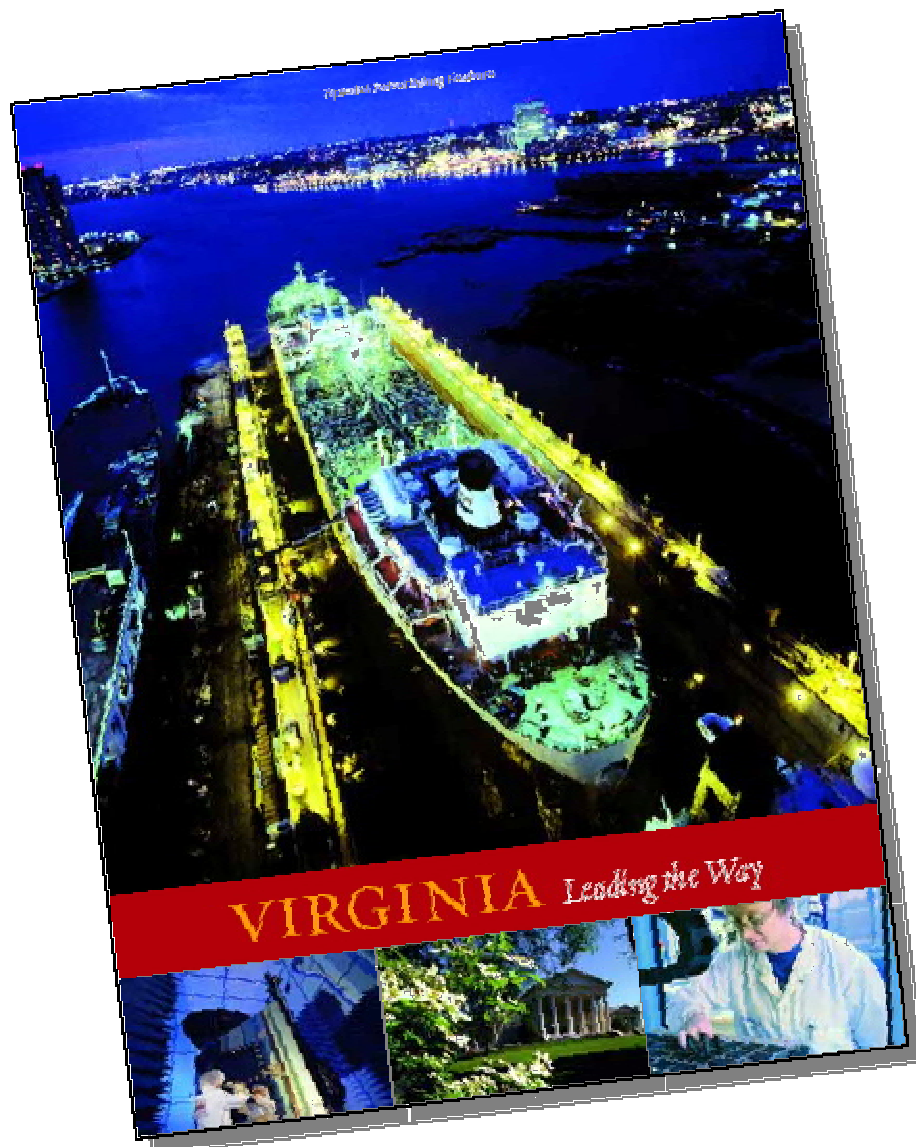
	CSX National Gateway
	CSXT double stack routes
	Other CSXT routes

Supply Chain Supporting The Development of Offshore Wind Industries



- Available workforce
- Deepest water port for entire U.S. East Coast
- Unobstructed access
- Serviced by two first class railroads
- Ship repair facilities
- Enormous capability of marine industrial support businesses
- Developable properties exist to support the requirements of the offshore wind industry

Fourth Consecutive Year -Forbes Ranks Va. #1



***“... a smart labor force,
low costs, good regulatory
environment and a great
quality of life, and you get
Virginia, the runaway
winner in our listing of the
Top States for Business.”***

North Carolina Offshore Energy Exploration Subcommittee

Mr. Jeff Keever
Senior Deputy Executive Director
Virginia Port Authority
February 23, 2010

